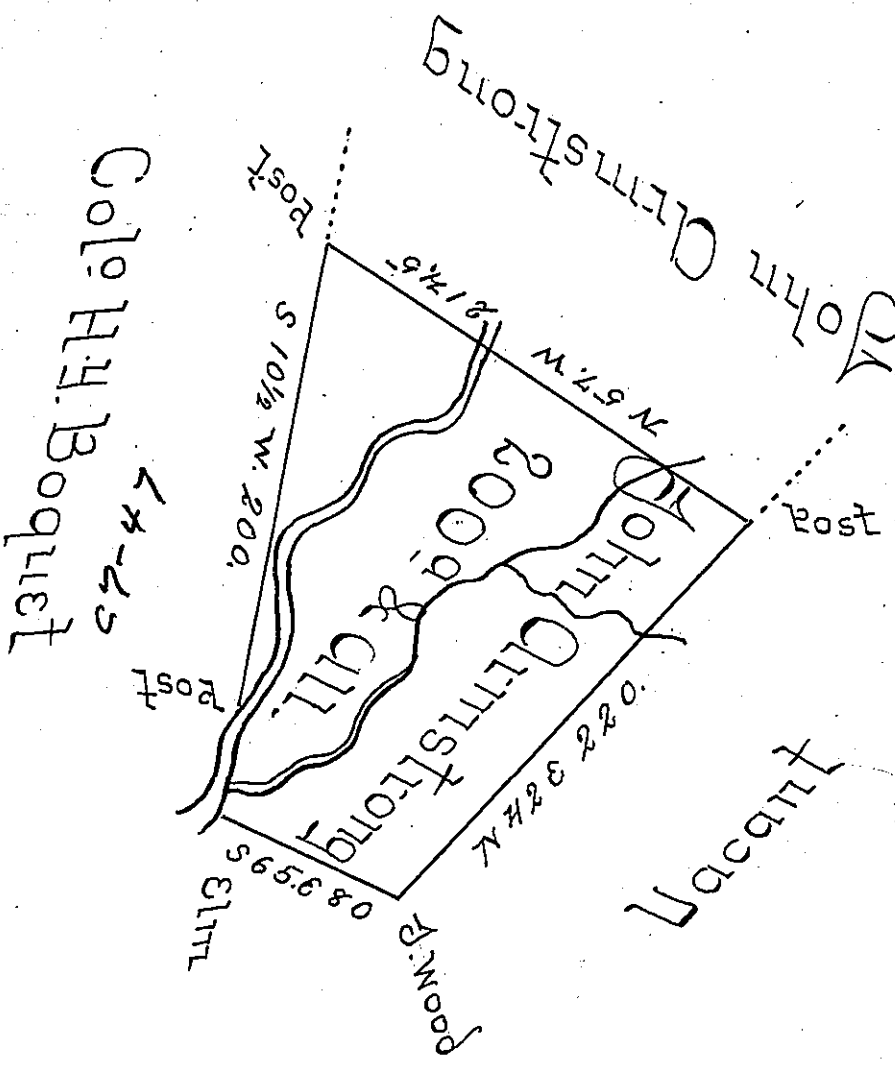


Courses & Distances  
down the Creek

S 43 W -- 10  
 S 5 W -- 24  
 S 43 E -- 17  
 S 42 W -- 9  
 -----  
 60 ps



Situated on the North East Branch of Dunning's Creek including the Big Elk Lick above the forks, in St. Clair Township Bedford County and surveyed the 3<sup>d</sup> day of October 1795. In Pursuance of a Warrant dated the first day of June 1762.

George Woods June 1762

Daniel Brodhead Esq  
 Surveyor General

IN TESTIMONY that the above is a copy of the original remaining on file in the Department of Internal Affairs of Pennsylvania, made conformably to an Act of Assembly approved the 16th day of February, 1833, I have hereunto set my Hand and caused the Seal of said Department to be affixed at Harrisburg, this first day of April 1902.

*James W. Pitt*  
 Secretary of Internal Affairs.